

AliTrack

Powered by AVA

Digital Radiation Protection Tracking System

Garment Retrofitting Kit

Instructions to retrofit your existing radiation protection garments to work with the AliTrack Digital Tracking System.



**Watch the video
& learn more**

Scan here:



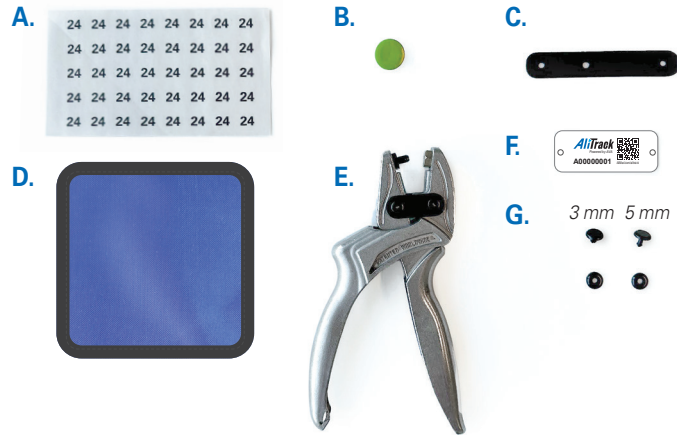
alitracksupport@AliMed.com



800.225.2610 x1236

Set Up – Kit Components

Note: Not all AliTrack Retrofitting Kits include the full set of components below. Instructions are based on the full kit—skip any steps that do not apply.



- A. Annual Inspection Stickers (Text Indicator)*
- B. Annual Inspection Buttons (Color Indicator)*
- C. Indicator Attachment Loops
- D. Practice Swatch
- E. Hole Punch (3 mm diameter)
- F. AliTrack Tags
- G. Black Plastic Rivets
 - 5 mm male w/Backers
 - 3 mm male w/Backers

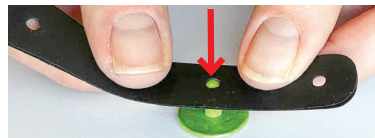
*Text and Color Indicators will vary by year

Step 1

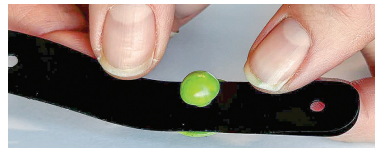
If using optional Annual Inspection Stickers, apply clear sticker (printed with the last two digits of the current year) to the face of the Annual Inspection Button.

Place the Button face down on a flat surface. Align the middle pre-punched hole of the Indicator Attachment Loop with the Button post and press the Loop down onto the post.

Ensure the post is pushed all the way through the Loop hole and is securely in place.



Use middle loop hole to secure Indicator Button



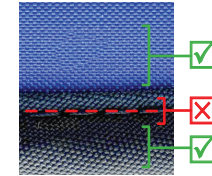
Button snaps in place when secure

Step 2

Practice First!

Use enclosed Practice Swatch to test Step 2 **before** punching holes in your garment.

Determine placement for AliTrack Tag on garment, ensuring the hole punch reaches the desired location. Apply holes in a **non-leaded area** up to 0.75" from outer edge. **Important:** punch hole on or off the binding/trim—**DO NOT punch through garment stitching.**



For best results, place the AliTrack Tag in the desired location and mark the left-side hole of the Tag with a marker. Place the Tag aside and punch a single hole through the garment at the marked location with the Hole Punch.



Mark hole placement before punching

Step 3

With the top of the Annual Inspection Button facing you, fold Indicator Attachment Loop in half to align the two outer holes. Place the AliTrack Tag on top of the Loop, aligning the left-side hole of the Tag with the two Loop holes.



Connect Tag and Loop with a male Rivet

Insert one Plastic Rivet through all three holes to connect the Tag and Loop (choose 5 mm or 3 mm for best fit—see selection guide on back). Then insert the Rivet into the pre-punched garment hole created in Step 2.



Insert Rivet with Tag and Loop into garment hole

Secure the Backer onto the Rivet.



Secure Rivet with Backer

(Continued on back)

Step 4

With the left-side Rivet secured, orient the Tag as desired. Either mark or directly punch the second hole through the right-side hole of the Tag and through your garment—**DO NOT punch through garment stitching.**

Insert a second Rivet into the right-side hole (choose either 5 mm or 3 mm Rivet for best fit—see selection guide below). Secure the Backer onto the Rivet. Lightly pull on the Tag to ensure the connection is secure.



Insert right-side Rivet and secure with Backer

Rivet Selection Guide—5 mm or 3 mm?

Backers make an audible click when secured properly. They should be snug to prevent excessive Tag movement without adding tension on the rivet so the Backer does not pop off. Rivets are removable and can be replaced with another size for best fit.



You're ready for AliTrack!

Your radiation protection garment is now ready for tracking in the AliTrack Digital Tracking System.



Have questions or need assistance?

Contact us for support!



alitracksupport@AliMed.com



800.225.2610 x1236

Pub. #8150 • ©2024 AliMed® Inc. All rights reserved.

